



M7 TREADMILL

Contemporary styling and expertly crafted. Powerful, yet efficient. The M7 treadmill is a complete package of performance, durability, comfort and ease-of-use for any fitness purist. The smooth deck absorption system with urethane suspension reduces stress on joints and knees which helps with users longevity.

FOUR CONSOLE OPTIONS AVAILABLE



LED



SPORT



TOUCH



Entertainment Plus 2.0

FEATURES OF THE CIRCLE FITNESS M7 TREADMILL

Quick Shift (Option)



Make easy and effective adjustments to speed and incline to enhance your workouts

Smooth Deck



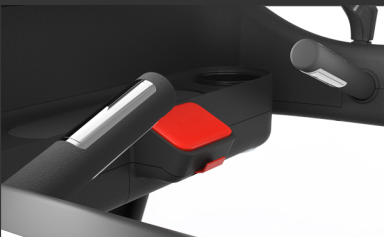
Our shock absorption system delivers a perfect balance of cushioning and road feel to bring you the ultimate tactile running experience

Fan



Multiple strength levels that provide a cool breeze as you exercise

HR Sensors & Telemetry



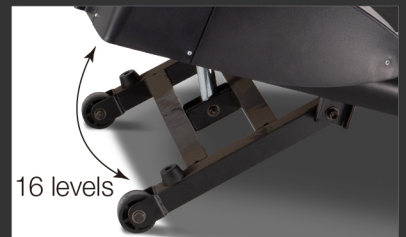
Monitoring heart rate is simple with equipped handgrip sensors or optional wireless telemetry strap

Storage/Reading Rack



Storage for bottle for users to have easy access to while working out

16 levels incline



The M7 offers a 16 levels incline for a more rigorous hiking feel

Support Frame



Provides increased strength, adding the durability needed for a commercial environment

Extra Large Running Surface



Features an extra wide 22 inch running surface for increased comfort

Safety Stop



Detects when a machine is running without the user and stops the machine



M7 TREADMILL

TECHNICAL SPECIFICATIONS

DECK	Chenxun™ Reversible Deck
BELT	Habasit Commercial Grade
RUNNING AREA	153L X 55W cm (60.23" L X 21.65" W)
SPEED RANGE	0.8 ~ 12.5 mph (0.5 ~ 20 km)
INCLINE RANGE	0-16%
STEP-UP HEIGHT	8.7 in (20 CM)
ROLLERS	3.5 in (90 mm)
MAXIMUM USER WEIGHT	180 kgs (400 lbs)

ELECTRICAL SPECIFICATIONS

POWER REQUIREMENT	110Vac ~ 220Vac ± 20 50/60Hz
DRIVE SYSTEM	3.0 HP (continues) / 5.0HP (duty)

FRAME

FRAME MATERIAL	Steel			
NET WEIGHT OF FRAME & CONSOLE	LED 363 lbs (165 kgs)	TOUCH 364.5 lbs (165.4 kgs)	SPORT 361.9 lbs (164.5 kgs)	Eplus 2.0 367.4 lbs (167 kgs)
PACKAGED WEIGHT	LED 399.3 lbs (181.5 kgs)	TOUCH 400.9 lbs (181.8 kgs)	SPORT 398.2 lbs (181 kgs)	Eplus 2.0 403.7 lbs (183.5 kgs)

DIMENSIONS

EQUIPMENT DIMENSIONS	85 (L) X 38 (W) X 63 (H) in / 2153 (L) X 974 (W) X 1599 (H) mm
PACKAGING DIMENSIONS (Body)	90 (L) X 39 (W) X 15 (H) in / 2275 (L) X 980 (W) X 391 (H) mm
PACKAGING DIMENSIONS (Console)	43 (L) X 40 (W) X 21 (H) in / 1080 (L) X 1020 (W) X 530 (H) mm

FOUR CONSOLE OPTIONS AVAILABLE



LED



SPORT

DISPLAY		
SCREEN	LED 7 segments with Dot-Matrix	8" Touchscreen + 2 Numeric LED Windows
LANGUAGE OPTIONS	English, German, Spanish, Dutch, Portuguese, Italian, Swedish, Russian, Polish, French	English, German, Spanish, Dutch, Portuguese, Thai, Swedish, Russian, French, Arabic, Japanese, Turkish, Vietnamese, Chinese (simplified & traditional)
PRE-PROGRAMMABLE WORK OUTS	Yes, 10	Yes, 32
QUICK START OPTIONS	Yes	Yes
INTEGRATION		
BODY ANALYZER	No	Yes
EXERCISE DATA	No	Yes
WEARABLE APPS	No	Yes (Runkeeper, GoogleHealth, Fitbit, Garmin)
CircleCloud GO	No	Yes
ENTERTAINMENT APPS	No	No
FACILITY MANAGEMENT	No	Yes
CONNECTIVITY		
USB	Yes	Yes
LAN	No	Yes
CSAFE	Optional	Optional
BLUETOOTH	No	Yes
TV	No	No
HDMI IN	No	No
WIRELESS CHARGING	Optional	Yes
WiFi	No	Yes
AUDIO OUT	No	No
HEART RATE (HR) DETECTION	Hand Pulse (5kHz Wireless)	Hand Pulse (5kHz Wireless)
MIRACAST	No	No
FAN	Optional	Optional

CircleFitness.com

Here at Circle Fitness, we have been providing high quality, efficient, easy to use, and durable fitness equipment for twenty plus years. Quality is foremost when it comes to our equipment. We fully assemble each piece of our equipment in the factory to ensure that every feature and component operates as it should, and it can be easily assembled without problems. Very few companies in our industry perform this level of quality control. Our top tier quality is a result of using high quality materials in everything we build. We use military grade eight bolts to ensure a stable and reliable machine. These standards allow our products to offer full commercial quality even on light commercial products.



ALWAYS MOVING FORWARD

FOUR CONSOLE OPTIONS AVAILABLE



Entertainment Plus 2.0

DISPLAY		
SCREEN	10.1" with Touch + 2 LED Window	15.6" Touchscreen
LANGUAGE OPTIONS	English, German, Spanish, Dutch, Portuguese, Thai, Swedish, Russian, French, Arabic, Japanese, Turkish, Vietnamese, Chinese (simplified & traditional)	English, German, Spanish, Dutch, Portuguese, Thai, Swedish, Russian, French, Arabic, Japanese, Turkish, Vietnamese, Chinese (simplified & traditional)
PRE-PROGRAMMABLE WORK OUTS	Yes, 24	Yes, 25
QUICK START OPTIONS	Yes	Yes
INTEGRATION		
BODY ANALYZER	No	Yes
EXERCISE DATA	No	Yes
WEARABLE APPS	No	Yes (Runkeeper, GoogleHealth, Fitbit, Garmin)
CircleCloud GO	No	Yes
ENTERTAINMENT APPS	No	Yes
FACILITY MANAGEMENT	No	Yes
CONNECTIVITY		
USB	Yes	Yes
LAN	No	Yes
CSAFE	Optional	Optional
BLUETOOTH	No	Yes
TV	No	Yes
HDMI IN	No	Yes
WIRELESS CHARGING	Optional	Yes
WiFi	No	Yes
AUDIO OUT	No	Yes
HEART RATE (HR) DETECTION	Hand Pulse (5kHz Wireless)	Hand Pulse (5kHz Wireless) Ant+
MIRACAST	No	Optional
FAN	Optional	Yes

CircleFitness.com

Here at Circle Fitness, we have been providing high quality, efficient, easy to use, and durable fitness equipment for twenty plus years. Quality is foremost when it comes to our equipment. We fully assemble each piece of our equipment in the factory to ensure that every feature and component operates as it should, and it can be easily assembled without problems. Very few companies in our industry perform this level of quality control. Our top tier quality is a result of using high quality materials in everything we build. We use military grade eight bolts to ensure a stable and reliable machine. These standards allow our products to offer full commercial quality even on light commercial products.



ALWAYS MOVING FORWARD