



## R8 RECUMBENT BIKE

Simulate the feel of the open road while reducing pressure on the knees with the re-modeled R8 recumbent bike. Easy-to-adjust seating positions and reclining back support provide a comfortable biking experience. The fashionably modern ID design of the new consoles allow for a larger screen, storage area, and brighter image. The resistance design has been electrically retuned for sharper movement and more comfortable use. Also the upgraded software in the Eplus Full is equipped with Bluetooth technology for wireless headphones and HR belts.

### FOUR CONSOLE OPTIONS AVAILABLE



LED (New)



Touch (New)



Sport (New)



E Plus (New)

## FEATURES OF THE CIRCLE FITNESS R8 RECUMBENT BIKE

### Resistance Level Control



Change the intensity of your ride easily with the shift lever at any point of your workout

### Walkthrough Design



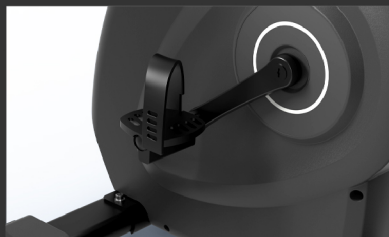
Makes mounting and dismounting easy and comfortable

### Adjustable Seatback



Seatback recline angle can be adjusted to maximize your workout comfort

### Easy Strap



Getting in and out of the pedals only takes one hand with our easy strap technology

### U-Bar



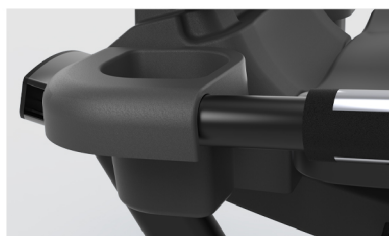
The specially designed R8 U-Bar serves as a gripping point while mounting and dismounting as well as providing an enhanced body support during high intensity workouts

### Reading Rack



An extra compartment suitable for reading material or other personal belongings

### Bottle Holder



Storage for a bottle and other possessions are available to users.

### Wireless Charging & USB



The wireless charging station is perfect for your phone and small electronic devices.

### HR Sensors & Telemetry



Monitoring heart rate is simple with equipped sensors or optional wireless telemetry strap



## R8 RECUMBENT BIKE

### TECHNICAL SPECIFICATIONS

Q FACTOR (PEDAL SPACING)	9.8 in (24.8 cm)
DRIVE SYSTEM	Self-Generating Electric Hybrid with Flywheel
RESISTANCE LEVEL	25 levels
RESISTANCE SYSTEM	Electrically Returned
MAXIMUM USER WEIGHT	400 lbs (182 kgs)

### ELECTRICAL SPECIFICATIONS

POWER REQUIREMENT (R8 LED, R8 10.1" Touch)	Self Generation
POWER REQUIREMENT (R8 SPORT, R8 Eplus 2.0)	100 ~ 240V ± 10 50/60Hz
MAXIMUM WATT @ 60 RPM	400W
MINIMUM WATT @ 60 RPM	40W
MINIMUM RPM (R8 LED, R8 10.1" Touch)	30 RPM
MINIMUM RPM (R8 SPORT, R8 Eplus 2.0)	10 RPM

### FRAME

	LED	Touch	SPORT	Eplus
NET WEIGHT OF FRAME & CONSOLE	188.5 lbs (85.5 kgs)	187.6 lbs (85.1 kgs)	189.6 lbs (86 kgs)	195.1 lbs (88.5 kgs)
PACKAGED WEIGHT	203.5 lbs (92.3 kgs)	202.6 lbs (91.9 kgs)	204.6 lbs (92.8 kgs)	210.1 lbs (95.3 kgs)

### DIMENSIONS

EQUIPMENT DIMENSIONS	67 (L) X 25 (W) X 56 (H) in / 1680 (L) X 630 (W) X 1420 (H) mm
PACKAGING DIMENSIONS	66 (L) X 15 (W) X 29 (H) in / 1670 (L) X 370 (W) X 730 (H) mm

## FOUR CONSOLE OPTIONS AVAILABLE



LED (New)



TOUCH (New)

DISPLAY		
SCREEN	LED 7 Segments with Dot-Matrix (White Light)	10.1" with Touch + 2 LED window
LANGUAGE OPTIONS	10 Languages: English, German, Spanish, Dutch, Portuguese, Italian, Swedish, Russian, Polish, French	15 Languages: English, German, Spanish, Dutch, Portuguese, Thai, Swedish, Russian, French, Arabic, Japanese, Turkish, Vietnamese, Chinese (simplified & traditional)
PRE-PROGRAMMABLE WORK OUTS	10 (Target / Rolling / Valley / Fat Burn / Ramp / Strength / Interval / Random / HRC / Constant Watt)	Training Course (8) - (Manual / Rolling-hills / Mountain Peaks / Fat Burn / Incline / Strength / Interval / Constant Wattage) Target Training (3) - (Time/Distance /Calories) HRC (4) - (Fatburn / Aerobic / Performance / Customize)
QUICK START	Yes	Yes
INTEGRATION		
BODY ANALYZER	NA	NA
EXERCISE DATA	NA	NA
WEARABLE APPS	NA	NA
CircleCloud GO	NA	NA
ENTERTAINMENT APPS	NA	NA
FACILITY MANAGEMENT	NA	NA
CONNECTIVITY		
USB	Charging	Program Update & Charging
LAN	NA	NA
CSAFE (POWER ONLY)	Optional	Optional
BLUETOOTH	NA	NA
TV	NA	NA
WIRELESS CHARGING	NA	NA
WiFi	NA	NA
AUDIO OUT	NA	NA
HEART RATE (HR) DETECTION	Hand Pulse (5kHz Wireless)	Hand Pulse (5kHz Wireless)
FAN	NA	NA

## CircleFitness.com

Here at Circle Fitness, we have been providing high quality, efficient, easy to use, and durable fitness equipment for twenty plus years. Quality is foremost when it comes to our equipment. We fully assemble each piece of our equipment in the factory to ensure that every feature and component operates as it should, and it can be easily assembled without problems. Very few companies in our industry perform this level of quality control. Our top tier quality is a result of using high quality materials in everything we build. We use military grade eight bolts to ensure a stable and reliable machine. These standards allow our products to offer full commercial quality even on light commercial products.



ALWAYS MOVING FORWARD

## FOUR CONSOLE OPTIONS AVAILABLE



Sport (New)



E Plus (New)

DISPLAY		
SCREEN	8" Touch + 2 LED window	15.6" Touch
LANGUAGE OPTIONS	15 Languages: English, German, Spanish, Dutch, Portuguese, Thai, Swedish, Russian, French, Arabic, Japanese, Turkish, Vietnamese, Chinese (simplified & traditional)	15 Languages: English, German, Spanish, Dutch, Portuguese, Thai, Swedish, Russian, French, Arabic, Japanese, Turkish, Vietnamese, Chinese (simplified & traditional)
PRE-PROGRAMMABLE WORK OUTS	Training Course (9) - (Manual / Target / Rolling-hills / Mountain Peaks / Fat Burn / Incline / Strength / Interval / Constant Wattage) HRC (4) - (Fatburn / Aerobic / Performance / Customize)	Training Course (9) - (Manual / Target / Rolling-hills / Mountain Peaks / Fat Burn / Incline / Strength / Interval / Constant Wattage) HRC (4) - (Fatburn / Aerobic / Performance / Customize)
QUICK START	Yes	Yes
INTEGRATION		
BODY ANALYZER	Yes	Yes
EXERCISE DATA	Yes	Yes
WEARABLE APPS	Yes (Runkeeper, GoogleHealth, Fitbit, Garmin)	Yes (Runkeeper, GoogleHealth, Fitbit, Garmin)
CircleCloud GO	Yes	Yes
ENTERTAINMENT APPS	NA	Yes
FACILITY MANAGEMENT	Yes	Yes
CONNECTIVITY		
USB	Program Updates & Charging (0.5A)	Program Updates & Charging (0.5A)
LAN	Giga LAN	Yes
CSAFE (POWER ONLY)	Optional	Optional
BLUETOOTH	Bluetooth 4.2 ( for BT login )	2 X Bluetooth 4.2 (1 for BT Login & Wireless Pulse / 1 for Wireless Audio)
TV	NA	DVBT/T2/C, ATSC, DTMB, ISDBT (Satellite:NA)
WIRELESS CHARGING	Yes	Yes
WiFi	Yes	Yes
AUDIO OUT	NA	3.5 mm Phone Jack / Wireless BT
HEART RATE (HR) DETECTION	Hand Pulse (5kHz Wireless)	Hand Pulse (5kHz Wireless) Ant+
FAN	Optional	Yes

## CircleFitness.com

Here at Circle Fitness, we have been providing high quality, efficient, easy to use, and durable fitness equipment for twenty plus years. Quality is foremost when it comes to our equipment. We fully assemble each piece of our equipment in the factory to ensure that every feature and component operates as it should, and it can be easily assembled without problems. Very few companies in our industry perform this level of quality control. Our top tier quality is a result of using high quality materials in everything we build. We use military grade eight bolts to ensure a stable and reliable machine. These standards allow our products to offer full commercial quality even on light commercial products.



ALWAYS MOVING FORWARD